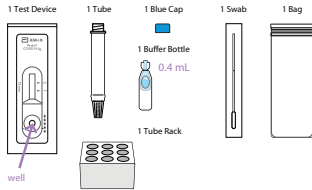


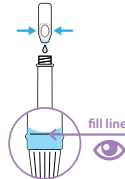
Easy-to-Use (Please refer to the detailed instructions inside the kit)

A. PREPARE FOR THE TEST

1. Ensure kit is at room temperature for at least 30 minutes prior to use. Open the box and remove 1 each of the components shown below to perform a single test. Do not open individual components until instructed.

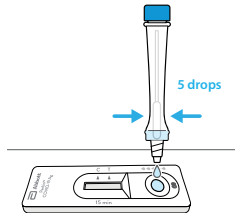


2. Squeeze the liquid from the Buffer Bottle into the Tube. You will need to squeeze at least twice.



C. PERFORM THE TEST

6. Squeeze 5 drops of liquid from the Tube into the well on the Test Device.

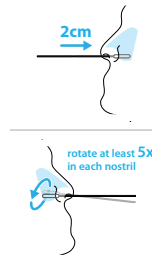


7. Keep Test Device flat on table. Read the result at 15 minutes. Do not read the result earlier than 15 minutes or after 20 minutes.

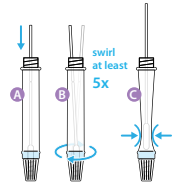


B. COLLECT THE NASAL SAMPLE

3. Insert the soft end of the Swab straight back into your nostril until resistance is felt (about 2cm). Slowly rotate the Swab, gently rubbing it along the insides of your nasal passage at least 5 times.
4. Using the same Swab, repeat step 3 in your other nostril.



5. Insert the Swab into the Tube. Swirl in the fluid 5 or more times while pushing against the wall of the Tube. Pinch the Swab tip through the Tube to remove any remaining fluid.

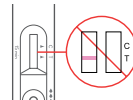


D. READ TEST RESULT

INVALID RESULT (test did not work)

Find the result window. If **NO** Control (C) line is present, the test did not work and is considered **invalid**.

This may be the result of an incorrect test procedure and the test should be repeated.



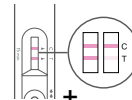
These are examples of invalid tests:



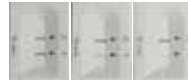
POSITIVE RESULT

Find result window and look carefully for two lines.

Positive Result: If you see two lines, Control (C) line and Test (T) line, this means **COVID-19 was detected**.



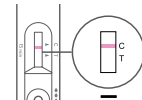
These are examples of positive tests:



NEGATIVE RESULT

Find result window and look for a single line in window.

Negative Result: If you see only the Control (C) line is present, this means **COVID-19 was not detected**.



This is an example of a negative test:

